

How to use

Zivafert[®] ▼

Highly Purified human
Chorionic Gonadotropin¹

ADMINISTRATION INSTRUCTIONS

Illustrated guide for the correct
preparation and administration
of Zivafert ▼ 5000 IU



Caring Innovation

Please read the patient information leaflet that comes in your Zivafert pack before administering your injection.

How to use **Zivafert 5000 IU**

Zivafert 5000 IU is a subcutaneous injection (given under your skin).

Each vial should be reconstituted only once and each single injection should be performed immediately after the dose is drawn up.

After suitable advice and training your healthcare professional may ask you to inject Zivafert 5000 IU yourself.

Before your first injection, your healthcare professional must:

- have informed you of the potential injection sites for self-administration;
- have demonstrated how to prepare the solution for injection;
- have explained how to prepare the correct dose of injection.

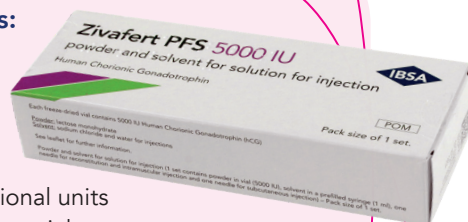
BEFORE INJECTING ZIVAFERT 5000 IU YOURSELF, READ THE FOLLOWING INSTRUCTIONS CAREFULLY:

- Check the expiry date on the pack and do not use the product if it has expired.
- Please note that Zivafert pre-filled syringe comes in a vial of 5,000 international units (IU).
- If you are unsure of your prescribed dose please consult your healthcare professional.
- Before use, Zivafert must be stored below 25°C but should not be refrigerated.

Each Zivafert 5000 IU set contains:

- One pre-filled syringe of solvent
- One long green drawing up needle
- One short grey injection needle
- An ampoule of Zivafert 5000 international units
- this is in the form of a powder within a vial

You will also need a plastic sharps bin and lid



What Zivafert PFS is:

Zivafert PFS contains human Chorionic Gonadotrophin, a hormone obtained from purified human urine, belonging to the 'gonadotrophin' family, which are natural hormones involved in reproduction and fertility.

What Zivafert PFS is used for:

Zivafert PFS is used:

- To help develop and ripen several follicles (each containing an egg) in women undergoing assisted reproductive technologies (procedure that may help you to become pregnant) such as 'in vitro fertilisation' (IVF).
- To help release an egg from the ovary (ovulation induction) in women who cannot produce eggs ('anovulation'), or women who produce too few eggs ('oligo-ovulation').

How to inject **Zivafert** at home



1. Before Use



Prepare a clean surface and wash your hands with soap and warm water.





2. Preparing the injection

It is important not to remove the white collar at any stage.



Remove the coloured plastic cap from the Zivafert vial you are going to use for this injection by gently pushing it upwards.



Take the pre-filled syringe containing solvent and the long green needle. Remove the rubber cap from the syringe and break the seal off the green needle and attach to the syringe.

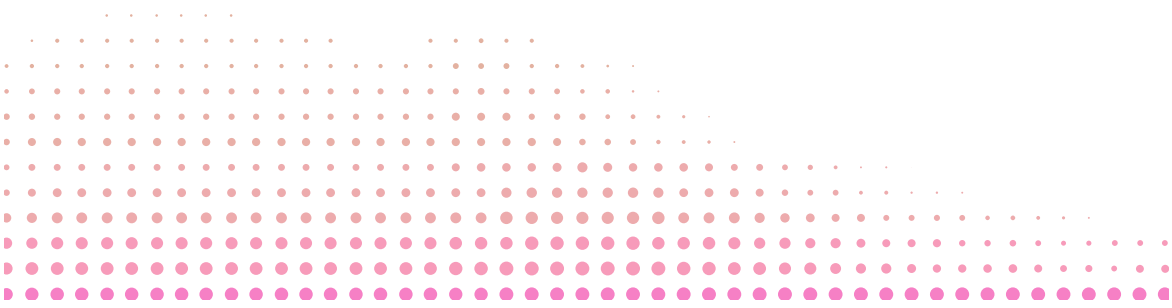


Remove the protective needle cover.



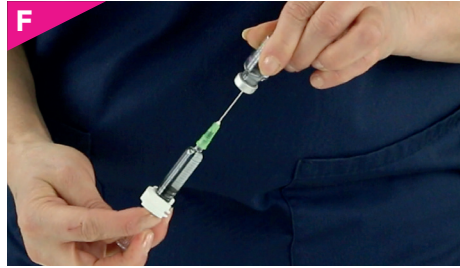
Holding the vial securely, push the needle through the centre of the rubber membrane in the top of the vial and slowly inject the solvent to avoid foaming or frothing.

*The white powder dissolves immediately.
Please do not shake the vial.*

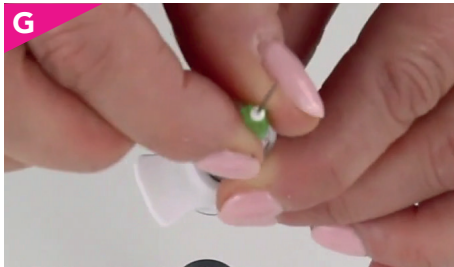




Once the white powder has completely dissolved draw up all of the liquid into the syringe.



Now point the needle upwards, draw back the plunger slightly to ensure no liquid is left in the needle.



Detach the green needle from the syringe and dispose of it in the sharps bin.



Remove the grey injection needle from its pack with the protective needle cover still in place and firmly attach it to the syringe.



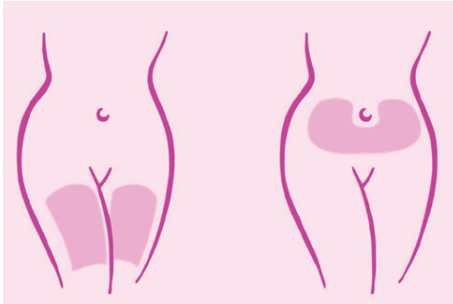
Remove the protective needle cover. Keeping the needle pointing upwards, very gently tap the syringe so that any air bubbles are at the top of the syringe and slowly push the plunger of the syringe until any air space or bubbles have been expelled and a tiny droplet of liquid appears at the end of the needle.

If you have been prescribed more than one vial of medication, inject the solution already in the syringe into the second vial.





3. Injecting the solution



Your healthcare professional will have already advised you where on your body to inject your medicine.

The usual places are the thigh or the lower abdominal wall below the navel.



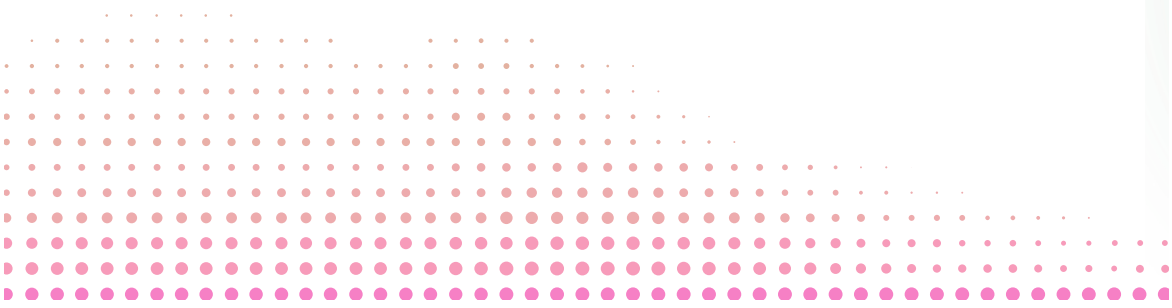
Firmly pinch the skin together.

With the other hand, insert the needle with a dart-like motion at an angle of 45° or 90° degrees. Inject under the skin.

Do not inject directly into a vein. Push the plunger slowly and steadily, so the solution is correctly injected and the skin tissues are not damaged.

Take as much time as you need to inject.

Pull the needle straight out and apply pressure to the injection site.





Discard all your used needles, syringes and injection materials in a sharps dispenser.

Do not close the lid of the sharps bin until you have completed your whole course of treatment, at which time you should dispose of the sharps bin as you have been advised by your clinic.



Zivafert 5000 IU

Powder and solvent for solution for human Chorionic
Gonadotrophin (hCG) injection

How to use Zivafert 5000 IU

Watch the step-by-step video of this guide



▼ This medicine is subject to additional monitoring.

This will allow quick identification of new safety information. You can help by reporting any side effects you may get. See Yellow Card | Making medicines and medical devices safer ([mhra.gov.uk](https://www.mhra.gov.uk)) for how to report side effects.

If you get any side-effects, talk to your doctor, pharmacist or nurse. This includes any possible side effects not listed in the package leaflet.

You can also report side-effects directly via the Yellow Card Scheme at <https://yellowcard.mhra.gov.uk/>.

By reporting side-effects, you can help provide more information on the safety of this medicine.

To report a side effect or product complaint to IBSA Pharma please contact
IBSA Pharma Ltd on 01923233466 and medicalinformation.uk@ibsagroup.com

References:
Patient leaflet information
Zivafert 5000 IU: summary of product characteristics

IBSA